



KVARNER
Diversity is beautiful



Croatia's Kvarner Bay

Stunning places to discover

Ideal for small and medium ships





Croatia's Kvarner Bay

The Mediterranean is the cradle of civilisation. From the ancient Egyptian and Mesopotamian cultures, through ancient Greece and Rome, the Mediterranean has been an area where myths and historical reality have constantly intertwined. It is a place where people live in a specific Mediterranean way, which makes this area different from the north of Europe, from the pragmatic approach to work and life in America, or from the total dedication to work typical of the Far East. This is a happy mixture of cultures, nations, and religions; an area where the various peoples living on the coast are deeply aware that DIVERSITY IS BEAUTIFUL.

This awareness is also present on the Adriatic coast. The Adriatic is part of the Mediterranean Sea, and reaches deep into the European continent, practically to the heart of Central Europe. Generally speaking, the entire Mediterranean is like a large lake that stretches from the Atlantic Ocean (Gibraltar) to the edge of the African continent in the south, to the Euro-

pean mainland in the north, and in the east to Asia Minor, which marks the beginning of the great Asian continent. In this large lake, one of the most beautiful gulfs is the Adriatic Sea.

From the Strait of Otranto to Rijeka and Trieste, there are more than a thousand kilometres of indented Croatian coastline and over 1,300 islands, islets and rocks. This is still an area of unspoilt natural beauty and an oasis of the kind that is hard to find today. When sailing in the Adriatic, you cannot be entirely sure if you are out on the open sea, or whether land is close at hand, be it an island or the beautiful mainland. The legendary hero Odysseus sailed in the Adriatic too, just as thousands of modern skippers do. Today, more and more cruisers sail into the Adriatic, as it is a prestigious and attractive destination for their guests. When cruising in the Adriatic, those modern travellers in search of beauty, enjoyment, peace and relaxation can restore their inner peace and psychological and physical balance.

Content

Kvarner	4
Opatija	6
Rijeka	8
Cres	10
Lošinj.....	12
Rab.....	14
Krk.....	16
The Crikvenica and Novi Vinodolski Riviera	18

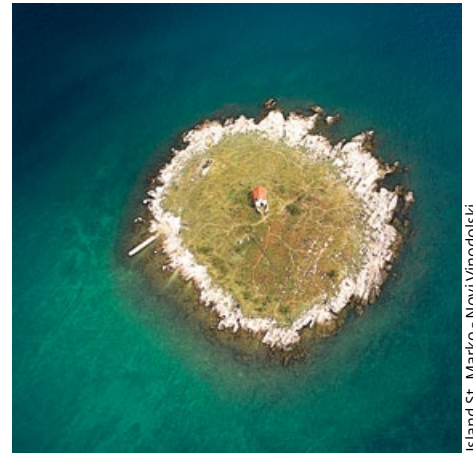
Technical data

General	20
Recommended anchorages.....	20
Opatija	21
Rijeka	24
Rab.....	27
Mali Lošinj.....	28
Crikvenica	29

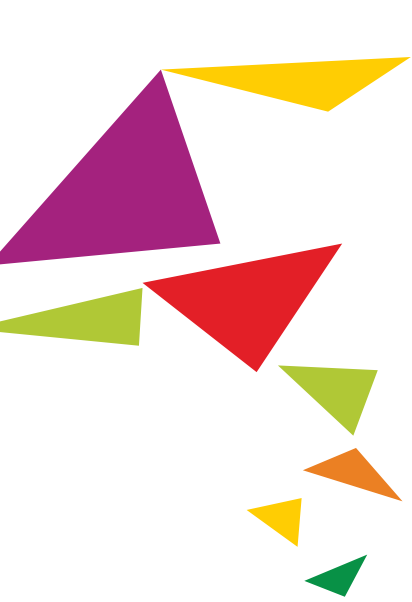




Krk Island - Stara Baška



Island St. Marko - Novi Vinodolski



Beach - Rijeka

Kvarner

The northernmost part of the Adriatic Sea of the Croatian coast, the part that practically reaches into the heart of Central Europe, is called Kvarner or the Kvarner Gulf. This is the part of the Adriatic Sea where the pleasant Mediterranean climate is refreshed in the summer by the air from the mountains, where the amount of precipitation remains in balance throughout the year, and where snow is a real sensation because it occurs so rarely and does not last long. Winters here are mild and often warmed by the rays of the winter sun, and scent of the laurel and conifers intoxicates the walkers, who benefit from breathing in the sea.

Kvarner is a miniature world of its own, where people traditionally speak one or more foreign languages in addition to their mother tongue. What makes

Kvarner so special is its numerous small towns, its islands scattered like pearls in the sea, and its distinctive combination of beautiful natural scenery and rich cultural and historical heritage. Here the influence of Central European architecture is so evident that travellers must ask themselves whether they are in the Mediterranean or the heart of Europe.

History

Kvarner is also distinguished by its tumultuous history, which has had an impact on many historical events in the world. The region's centre, the harbour town of Rijeka, is the birthplace of the powerful torpedo, and was the first place to suffer under fascism in the form of D'Annunzio's legionaries. Today we proudly present this richness of diversity, historical change and cultural amal-

gams as the BEAUTY OF DIVERSITY.

Sail into

To sail into the Kvarner Gulf of the Adriatic Sea means to enter a world of magic and to start living a fairy tale. Seagulls flying above your ship will bid you welcome, while playful dolphins swimming alongside will cheer up even the hardest heart and bring a smile to the face of travellers.

Gastronomy

In the local restaurants, you can sample delicious lamb prepared in a variety of ways. In the excellent fish restaurants, you must savour the world's tastiest scampi (Kvarner scampi), and also fish that live in the clean waters and have a true taste of the sea. Imagine your surprise when after disembarking, you are offered a glass of tap water with



Frankopan Castle



Kvarner scampi



Dolphins - Lošinj Island



Olive trees

Interesting facts

- the harbour town of Rijeka, is the birthplace of the powerful torpedo
- the world's tastiest scampi lives in Kvarner bay (Kvarner scampi)
- Kvarner is special because of its numerous small towns, its islands scattered like pearls in the sea, and its distinctive combination of beautiful natural scenery and rich cultural and historical heritage
- you can meet dolphins during your sailing through Kvarner bay

your cup of coffee! This is an area that has excellent drinking water, and today the inhabitants of Kvarner and their guests have the privilege of drinking healthy water without special chemical treatment.

Location

In the Kvarner area, you can disembark or organise a landing at the following locations: Rijeka, Opatija, Cres, Lošinj, Rab, Krk and Crikvenica. There are also other possibilities, but these are our recommendations: after all, we know our paradise best! Finally, before leaving the ship, we must reveal to you our biggest secret: the greatest wealth of Kvarner and Croatia is its people. Get to know them, drink a cup of coffee and have a chat with them, and feel their warmth and closeness.





Opatija by night

Opatija

Opatija is known as the cradle of Croatian tourism, and with good reason. Almost 170 years ago, in 1844, a rich merchant from Rijeka, Ignatio Scarpa, built the Villa Angiolina here as a holiday home. After realising the benefits of Opatija and its mild Mediterranean climate, characterised by an abundance of humidity and ozone, which is especially evident during short summer showers, the Austrian court chose Opatija as its winter resort. As a result, Opatija became a fashionable winter destination, and very quickly a health resort for the Austrian and European nobility too. Only the best was good enough for Opatija. As a result, a series of magnificent hotels was built here that are today still the pride of the town's hotel and hospitality industry. Opatija developed as a small, multicultural oasis for the European nobility and later the growing bourgeoi-

sie. As in the nearby city of Rijeka, people in Opatija communicated in several languages, while many crowned heads used to regularly visit the town with their families or lovers.

Culture

Opatija is today almost entirely protected as monument of culture, a town where tradition, the glory of its former aristocratic tourism, and its Austro-Hungarian spirit are boldly mixed with a modern approach to fun and entertainment as required by the younger generations and free-thinking modern visitors.

The city

Today, Opatija lives a rather quiet life. The ritual of drinking coffee in the morning while reading the newspaper and chatting with friends is well accepted by the numerous visitors to the town,

and the wide range of events enrich the life of Opatija's inhabitants and all those who choose this town as their holiday destination. Four food products symbolise Opatija and its surroundings: asparagus, cherries, sweet chestnuts and chocolate. During the asparagus, cherry and sweet chestnut seasons, the offer of the local hotels and restaurants is based on these items and other products made from them. Two festivals, one dedicated to chocolate, and the other to coffee, reveal a change in nutritional thinking and reflect modern life. During the Chocolate Festival, young and old visitors eagerly surrender to the previously unthinkable combinations of tastes of the finest chocolates.

Gastronomy

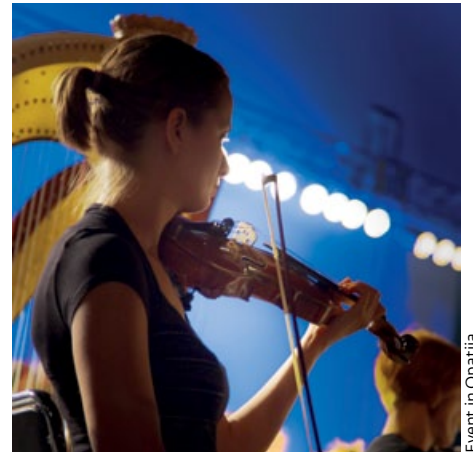
When it comes to excellent food and the richness of tastes and aromas of the



Park and Villa Angiolina



Wellness center



Event in Opatija

Interesting facts

- Opatija became a fashionable winter destination, and a health resort for the Austrian and European nobility thanks to its mild Mediterranean climate
- Two festivals, one dedicated to choco-

late, and the other to coffee, reveal a change in nutritional thinking and reflect modern life

- Mount Ucka, a mythical mountain, overlooks coastal towns and villages

Opatija port technical data, contacts and other info can be found on page 21

traditional local cuisine, you can also go on a gastronomic excursion. A serving of freshly caught fish seasoned with superb olive oil, followed by a glass of quality homemade wine, can be a true culinary experience. This shift from everyday life and fast food habits brings people back to basics, so even if it costs a bit more, this is a pleasure one should have and fully enjoy once in a while.

Outdoor

Opatija and its neighbouring coastal towns and villages are overlooked by Mount Ucka, a mythical mountain on whose slopes traces of life from ancient history have been found. Ucka also has some outstanding natural scenery. Ucka Nature Park protects the local flora and fauna, especially the great number of birds, including some very rare ones. If you want to fully enjoy these beautiful

landscapes, take a few hours of your time to get away from civilisation and enjoy the true beauty of the unspoilt nature. You will soon realise that this is a unique experience that money cannot buy. Here, only the most solid currency has any value: love for nature and beauty!

Surroundings

Short trips that last three to six hours will take you to Opatija's immediate surroundings. Veprinac, an ancient town on the slopes of Mount Ucka, today still leaves a strong impression on every visitor. You can enjoy a similar experience by visiting the hilltop town of Mošćenice, where you can admire the ancient town walls and visit the local museum. A string of places on the coast, starting from Ika, Icici, and Lovran and stretching all the way down to Mošćenicka Draga

and Brsec show just how attractive this area has always been for human settlement. Modern buildings built beside ancient stone houses show that modern man is not immune to this beauty either, and is willing to share it with visitors. In the past, the inhabitants of small local villages made their living by producing healthy food for an elite aristocratic clientele. Fortunately, times have changed, and local people are becoming increasingly involved in tourism.

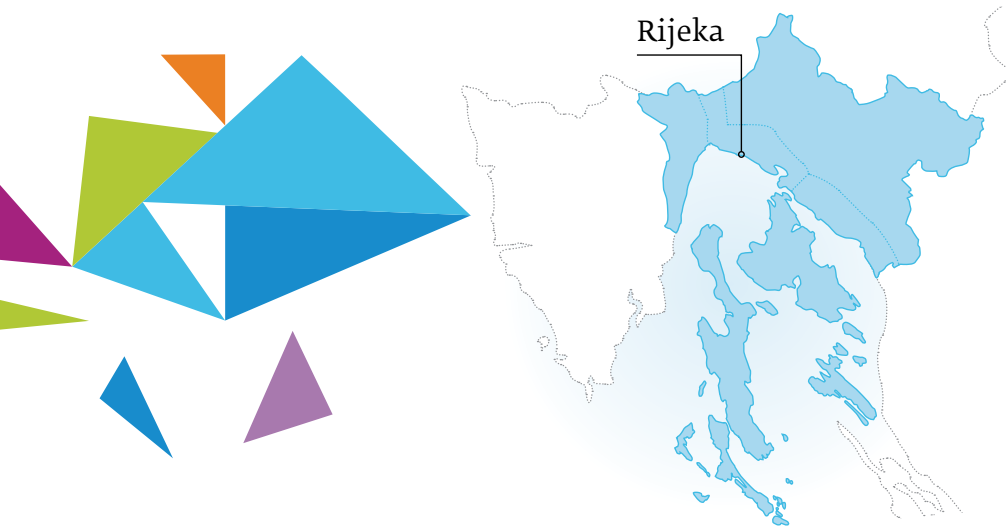




Port of Rijeka



Korzo



Rijeka

Croatia's largest port is superbly equipped to receive cruisers. Rijeka is the administrative, cultural, industrial and university centre of this region, which is called the County of Primorje and Gorski kotar. A newly-built, modern student campus has turned Rijeka into a town of young and educated people, and a place where many students from all over Europe and the world study. The centre of the town can easily be reached from the port in ten minutes on foot. Before you go under the city clock tower, do not forget that this part of the town was created by reclaiming the land from the sea.

The city

Rijeka is best seen on foot. This is a perfect town to live in, as it is neither too big nor too small. Everybody knows each other, yet everyone has their privacy. Do not miss the chance to visit the town with the help of a professional tourist

guide (they speak at least 15 languages)! In the heart of the former Old Town, which was practically destroyed in World War Two, the remnants of a Roman castrum are clearly visible. This is more or less as far as Roman civilisation stretched. Behind this area were barbarians and the unknown world of the tribes that were to invade and conquer Europe.

Architecture

We recommend taking a walk along the town's central promenade, the Korzo observing the perfectly preserved examples of modern and historicist architecture. In the former Old Town, there is a circular cathedral built in the baroque style and dedicated to St. Vitus. The name of this saint can also be seen in one of the first names of the city: Flumen sancti Viti. If you visit Rijeka in mid-June, you will have the chance to participate in



Church of St. Vitus

the feast of the town's patron saint, and charming ladies will offer you the sweetest cherries. If you are just on a short visit to Rijeka, do not miss the chance to visit Trsat by city bus or the "Tourist Bus". On a hill overlooking the canyon of the River Rječina, which gave the town its name (rijeka means river in Croatian), there is the oldest Marian shrine in Croatia: the Shrine of Our Lady of Trsat. This is where the most popular and greatest pilgrim to Trsat prayed in front of the image of Our Lady: Pope John Paul II. The legend of the transportation of the House of the Holy Family from Nazareth to Trsat in 1291 still lives in the minds of the numerous believers who go on a pilgrimage to Trsat to find consolation in Our Lady of Trsat, also known as the Queen of the Adriatic. In the chapel, there are the votive gifts of those who had the luck to survive the tragedy of the Titanic, which happened



Rijeka Carnival



Rijeka Carnival - Morčić



Trsat - Rijeka

Interesting facts

- Rijeka is Croatia's largest port
- town's central promenade, the Korzo is the perfectly preserved examples of modern and historicist architecture
- on a hill overlooking the canyon of

the River Rječina is the oldest Marian shrine in Croatia; the Shrine of Our Lady of Trsat

- the Rijeka International Carnival, celebrates its 30th anniversary in 2013

Rijeka port technical data, contacts and other info can be found on page 24

at a time when Rijeka was one of the biggest harbours from where the poor from the Austro-Hungarian Monarchy migrated for the New World in search of a new life. Rijeka was also the first town in Europe to suffer the wrath of the first fascist squadrons when D'Annunzio and his legionaries decided to annex Rijeka to Italy in 1919. There was tremendous destruction and theft of unprecedented proportions, and thousands of dead and wounded remained after "Bloody Christmas" as a bitter reminder of the "crazy poet" and his ambition to annex Rijeka to Italy.

History

Your tourist guides will show you the town's rich cultural and historical heritage and point out the unbelievable industrial heritage that many similar towns do not have, such as the first torpedo (1866), the first sugar refinery

in south-eastern Europe, the first oil refinery (1883) and the famous paper factory (1821), to mention just the most important ones.

Rijeka is not just a harbour that receives cruise ships. Rijeka is a place to visit and get acquainted and fall in love with; a place where one should drink tasty, cold water from the local Zvir spring. Legend says that anyone who drinks this water will return to Rijeka again and again.

Events

Many visitors come to Rijeka during the carnival, which is a period known locally as "the fifth season". The Rijeka International Carnival, which in 2013 celebrates its 30th anniversary with a parade that will surpass all previous ones, has been listed among the world's three biggest carnival events. It takes place in February each year.

From Rijeka, you can go on excursions to the wooded hinterland of Gorski kotar (with its protected natural areas of Zeleni vir, Vražji prolaz, Golubinjak forest, etc.) and the Risnjak National Park, home to Europe's largest predators, the brown bear, wolf and lynx, but also a treasury of various animal and plant species. In places, it has woods that remind one of the primeval forests that used to cover Europe in ancient times. The nearby small towns of Kastav, Grobnik, Kostrena and Bakar, and a series of other towns and villages, are places where every visitor will surely feel the beauty and peace of life lived in harmony with nature. At the same time, all the comforts of civilisation can be enjoyed here. Half-day or full-day tours are available to Zagreb, Croatia's capital, and to the Plitvice Lakes National Park or nearby Istria.



Punta Kriza - Cres Island



Cres



Diving

Cres

Cres is Croatia's largest island and is connected to the adjacent island of Lošinj via a small drawbridge. Cres boasts an extraordinarily beautiful coastline. In the north, it is rather wild and rough with small beaches that are hard to imagine, while the island's western and southern shores are more gentle, with a series of pebbly and sandy beaches. The northern part of the island is covered with thick forests of oak, hornbeam, elm and chestnut, and the southern part abounds in Mediterranean vegetation with extensive pastures and thick maquis. There is an interesting unexplained natural phenomenon in the form of the large freshwater Lake Vrana (more than 200 million cubic metres of potable freshwater), which is 5.5 kilometres long with an average width of 1.5 kilometres. The bottom of the lake is 74 metres below the level

of the sea and yet the freshwater and seawater never mix. Another unique natural feature is a bird that is nearly extinct, the huge griffon vulture, which nests on the inaccessible cliffs of the island of Cres. This is why these island has been proclaimed ornithological reserve. The small village of Beli in the northern part of the island of Cres is home to the Eco Centre Caput Insulae, where a small team of professionals and numerous volunteers from all over the world take care of ill and injured griffon vultures and monitor their movements by ringing and chipping them.

The island

In addition to the small town of Cres, the island also boasts several quaint villages such as the previously mentioned Beli with its griffon vulture eco centre, or Lubenice, a hilltop village

situated on a cliff 400 metres above the sea, which offers magnificent views of the Kvarner Gulf, and even Italy in fair weather. In summer, Lubenice hosts a series of classical musical concerts just like nearby Osor. Ancient Valun, a small car-free coastal settlement, is home to a Glagolitic tablet from the 11th century and a Glagolitic lapidary with copies of some of the most important Glagolitic monuments from the period between the 10th and 17th century. Martinšćica is located in the south-west of the island in a spacious bay with the 16th-century Church of St. Martin, a Franciscan monastery, and a castle of the Venetian Sforza family.

Outdoor

On the island of Cres, you can adopt a griffon vulture and care for it. These birds have a wingspan of up to 3 metres



Bell - Cres Island



Lubenice - Cres Island



Griffon vulture

Interesting facts

- Cres is Croatia's largest island
- On the island of Cres, you can adopt a griffon vulture and care for it
- Lubenice, a hilltop village is situated on a cliff 400 metres above the sea
- Ancient Valun, a small car-free coastal settlement, is home to a Glagolitic tablet from the 11th century
- There are many educational hiking trails

Cres port technical data is not provided. General info can be found on page 20

and can live as long as 50 years. They stay together in pairs and take care of their young. Cres is best visited on foot or by bike. There are many educational hiking trails, and the island also boasts more than 1,300 plant species: a fascinating number for such a small area. If you are looking for some refreshment after hiking or biking, you can find it in a local tavern offering excellent lamb (remember that here on the island, sheep are in the open air throughout the year grazing on the aromatic grass) or fresh fish from the island's waters. Combined with some organically grown vegetables and a glass of homemade wine, and seasoned with locally produced olive oil, it is really hard to imagine a better meal.





Mali Lošinj



Lošinj

Lošinj is the island of vitality! The modern tourist invitation to Lošinj is: feel, breathe, look, taste, touch and listen. Lošinj, an island that is a natural continuation of the island of Cres, bases its modern tourism offer on its beautiful nature, fresh air with beneficial effects on human health, and a rich tradition of providing tourist services. As early as the end of the 19th century, Lošinj was known as an island with excellent air rich in beneficial aerosols. Consequently, the entire island was used as a large open-air aromatherapy location. This natural benefit was officially confirmed in 1892 when Lošinj was proclaimed a climatic health resort. Three years later, the first tourists came to the island, and 1897 saw the opening of the first hotel. This marked the beginning of tourism on the island, which has continued right up to the present day.

In the 19th century, Lošinj was a very wealthy island: the local people used to sail across the world and would bring home many valuable items, including exotic plants and trees that they planted in the gardens of their villas or in the surrounding areas, creating a kind of botanical garden on the island. In addition to seafaring, the other main activity of the local people was shipbuilding. At that time, Lošinj had as many as 6 shipyards.

The island

Apart from the island of Lošinj, the Lošinj archipelago includes five large islands (Unije, Ilovik, Vele Srakane, Male Srakane, and Susak) and a series of small uninhabited islets and rocks. Each of these islands has its own distinctive features: Ilovik is full of flowers and boasts a great number of beehives; Unije has

fertile land just a few metres above sea level; Vele and Male Srakane are ideal for car-free relaxation away from civilisation; and Susak is sandy with restored vineyards and dense reeds. Until now, scientists have not been able to solve the enigma of how it is possible that this sand is not washed away by the sea or blown away by the wind. The island's distinctive folk costume, a colourful lace skirt, always attracts the attention of visitors to the island.

History

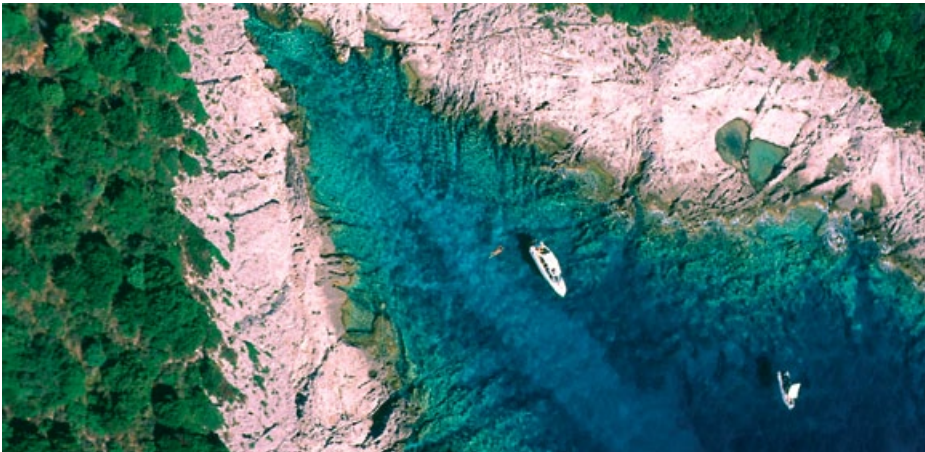
The wonderful nature and rich cultural and historical heritage provide an excellent basis for tourism. Health tourism is particularly important in the local area. Lošinj is also famous for its ancient remains, Romanesque churches, Renaissance buildings and magnificent villas built at the end of the last millennium.



Veli Lošinj



Dolphin



Interesting facts

- As early as the end of the 19th century, Lošinj was known as an island with excellent air rich in beneficial aerosols
- The best preserved statue of the Ancient Greek athlete, Apoxyomenos is exhibited in the new museum in the Kvarner Palace in Mali Lošinj
- If you want to, you can adopt your own dolphin: you will get a picture of it and an adoption certificate

Mali Lošinj port technical data, contacts and other info can be found on page 28

Particularly important for the island was the discovery of the best preserved statue of the Ancient Greek athlete, Apoxyomenos, which after ten years of restoration and many displays all over the world is now finally exhibited in the new museum in the Kvarner Palace in Mali Lošinj.

Nature

Lošinj is also an island of dolphins. The waters off the island are home to about 120 specimens of these beautiful, attractive and above all intelligent sea mammals. If you want to, you can adopt your own dolphin: you will get a picture of it and an adoption certificate. In this way, you can support the ongoing care and observation of the dolphins. As a reward, you might even from time to time encounter your dolphin cheerfully swimming in the waters off Lošinj!

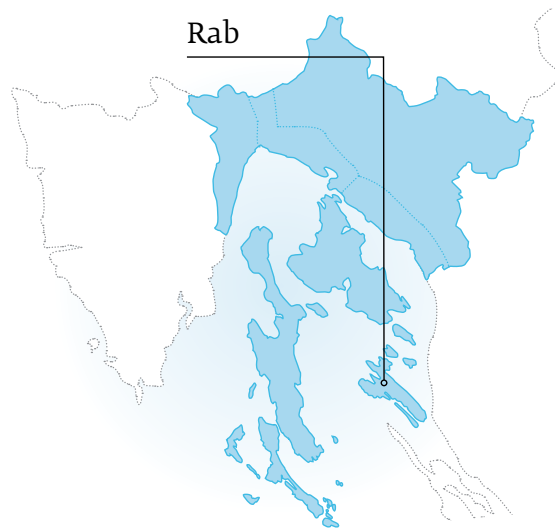
Lošinj's tourism offer is today based on local scents and tastes. We have already pointed out that Lošinj provides excellent open-air aromatherapy. The benefits of the local climate can easily be felt by all those who come to this island to enjoy its wonderful nature and do something good for their health. Hiking trails across the entire island provide an excellent opportunity to benefit from the scents of the local medicinal plants throughout the year. In addition, your hosts have prepared special programmes to acquaint you with the plants that are specific to certain times of the year. Citrus fruits, figs, olives, sage, pine, rosemary, lavender, agave, myrtle, wild rose, rose hip – these are just a few of Lošinj's plants that can be used for medicinal purposes, aromatic oils, or as a spice for various foods and beverages.

Lošinj has a lot to offer to those interested in hunting, spearfishing or sport in general. Some of these activities require more time, but those who find it, will leave this island enriched by a new memorable experience. Excursions to the neighbouring islands are also highly recommended. To step onto the sandy island of Susak or the island of Unije, which has an elevation of only 10 metres above sea level, is always a lasting experience.





Rab Island



Rab

Rab is the southernmost of the four large Kvarner islands (Cres, Lošinj, Rab and Krk). Just like Krk, it is located close to the mainland, opposite the magnificent and rough Mount Velebit, whose peaks of more than a thousand metres are often snow-covered as late as May, at a time that Rab benefits from its warm sun and mild Mediterranean climate. The mixture of the mountain air and balmy Mediterranean results in an additional benefit of Rab's climate at all times of the year.

The town

The town of Rab is often described as the town of four bell towers unique harmony of the towers of the town's churches: a frequent motif of photographs and paintings, and also many songs. Like Cres and Lošinj, Rab is also distinguished by its beautiful nature, fragrances and

aromas. Pine forests, olive groves, citrus fruits, myrtle and large areas covered with wild-growing broom make Rab distinctive.

The island

The northern part of the island, the one facing Mount Velebit, is rougher and rockier. Here, the strong gusts of the bura wind blow in the winter, and the sea salt leaves its mark on the surrounding land. Apart from the town of Rab, this island is also home to several smaller villages, most notably Lopar in the northern part of the island. Lopar boasts probably the most beautiful sandy beach in the Adriatic, which is particularly suitable for small children and non-swimmers, and the area's warm sand and seawater is good for those who suffer from aching bones or who just want to benefit from the sun and sea.

Rab is also known as the island of love, a place visited by the King of the United Kingdom Edward VIII and the divorced American socialite, Wallis Simpson. Their love was stronger than the attractions of the crown, and witnesses swore that the couple, enchanted by the beauty of Rab's beaches and sea, enjoyed more than just nude swimming here. This is why the beginnings of naturism on Rab are today connected with this couple, who preferred love to a crown. Rab was also mentioned as one of the potential destinations for the honeymoon of the new royal couple, Prince William and Princess Kate.

History

Rab is also known for the fact that its inhabitants founded the small country of San Marino, located on a hill above the famous Italian resort of Rimini. The



Bell towers



Rabska Fjera summer festival

Interesting facts

- The town of Rab is often described as the town of four bell towers
- Lopar boasts probably the most beautiful sandy beach in the Adriatic
- Rab is also known for the fact that its

inhabitants founded the small country of San Marino

- Rabska Fjera summer festival is a period when the town goes back to medieval times

Rab port technical data, contacts and other info can be found on page 27

strong links that still exist between San Marino and Rab, such as regular visits by delegations and inhabitants, demonstrate that this is not a legend but a historical fact. The crossbowmen of Rab and San Marino play a particularly important role in connecting the two places.

Events

Rab offers a lot of tourist events throughout the year. However, one week in July is particularly interesting: the Rabska Fjera summer festival is a period when the town goes back to medieval times. Thousands of costumed people walk the streets of the town, various local products are offered on every corner (oil, cheese, honey, wine, brandies, wooden and leather products, coins representing medieval money, and many other interesting souvenirs), and music

and laughter echo from all sides from early morning until late in the evening. Many visitors have already recognised Rabska Fjera as an event not to be missed and therefore plan their visit to the island to coincide with this period.

Trips

When on Rab, you might also want to visit the nearby islet of Goli otok, which during the Communist era housed one of the cruellest post-World War Two prisons. The national parks of Krka and Paklenica on Velebit are also well worth visiting. Both guarantee a magnificent, memorable experience.

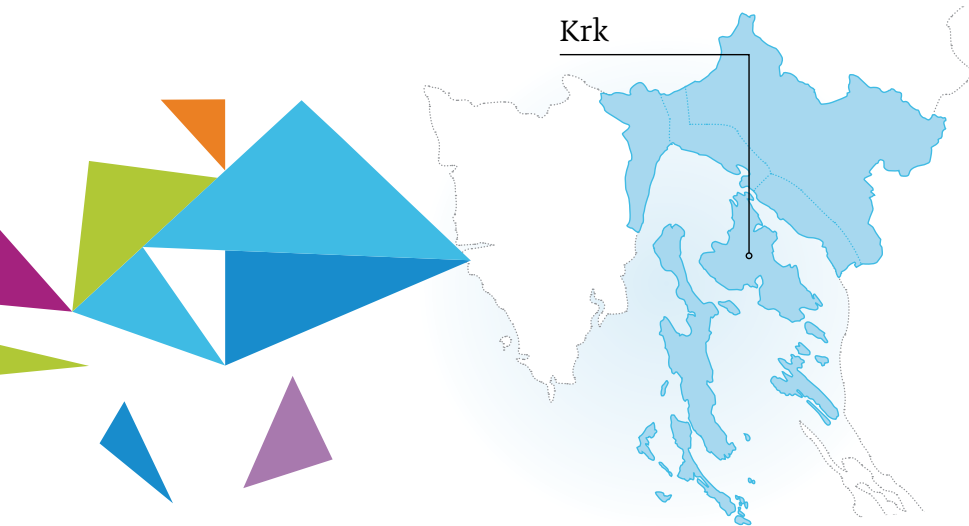




Krk Island



Church of St. Dunat - 12th century



Krk

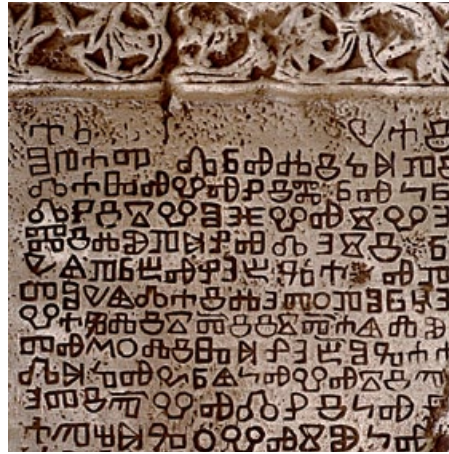
The mooring in front of the town of Krk on the island of the same name is one of the safest and most beautiful anchoring places on Kvarner's islands. Krk is an island that has been connected to the mainland by a 1,430-metre bridge for more than thirty years, which means that it can be easily reached. Krk is an island with a growing population, and a place of wealth and prosperity. The Golden Island, as it was known in Antiquity because of the riches it provided its inhabitants with, today is still golden in the true sense of the word. Its abundant olive groves, vineyards, thousands of freely grazing sheep, numerous hotels and tourist resorts dotted all over the island, wonderful modern villas and holiday homes, excellent roads connecting all parts of the island, dozens of kilometres of well-maintained biking trails, and hundreds of kilometres of hiking paths make Krk an ideal destination at any time of the year.

History

Apart from its beautiful natural scenery, Krk also abounds in historical heritage. Prehistoric traces have been found all over the island (Biserujka Cave, which is open to visitors) and in the town of Krk, which was known as *Splendidissima Civitas Curictarum* (the Splendid Town of Krk) in Roman times. The island of Krk is also the cradle of Croatian literacy, as testified to by the discovery that was made in 1851 in the Church of St. Lucy in Jurandvor near Baška. The Glagolitic inscription that was found there proved to date back to the year 1100. It is a stone tablet documenting a donation of land to the monastery in Jurandvor. It also makes mention of the Croatian King Zvonimir and is today known as the Baška Tablet. The original is kept in the foyer of the Croatian Academy of Science and Arts in Zagreb and a copy can be seen in Jurandvor. The Baška Valley also hosts a Glagolitic path

with 34 stone sculptures: four of them are large Glagolitic letters, and the rest were created in sculpture workshops in Baška.

Krk has a symbolic connection to the number 7. In the 7th century, it was populated by Croatian tribes; it was successfully defended from pirates seven times; the seventh Prince Frankopan was also the Duke of Krk, and the island's seven castles are today the basis for the seven units of local self-government on the island. The rich local heritage is kept in numerous churches, but also in the narrow lanes of the old towns of Krk, Omišalj, Dobrinj, Vrbnik, Baška, Dubašnica and Punat. In the Bay of Punat, there is the islet of Košljun with its famous Franciscan monastery (renowned for its rich library, ethnographic collection and series of interesting exhibits representing the daily life of the peasants and fishermen of the



Interesting facts

- in Antiquity Krk was known as the Golden Island because of the riches it provided its inhabitants
- Krk has a symbolic connection to the number 7
- The Baška Valley hosts a Glagolitic path with 34 stone sculptures
- the sparkling Valomet wine made from Žlahtina is left to mature in the sea at a depth of 40 metres

Krk port technical data is not provided. General info can be found on page 20

island of Krk) and the Church of the Assumption, whose main altar features a polyptych by Girolamo da Santa Croce.

Surroundings

All the places on the island can be easily reached by car in no more than an hour from the town of Krk, which is where the ships that come to visit usually anchor. When on Krk, make sure you visit its beautiful beaches and sea. Vela plaža in Baška is a beautiful semi-circular sandy and pebbly beach with a length of about 1,800 metres, and there are a number of smaller beaches, many of which can be easily reached by sea in a taxi boat. More than 300 kilometres of hiking trails and several dozen kilometres of specially designed biking trails provide perfect relaxation for the body and mind of modern man. A variety of nightlife and entertainment programmes is offered at numerous venues across the island. Younger visitors will

choose the large disco clubs, while the older ones will go for terraces with dancing music and pleasant restaurants and taverns offering a wide range of meat and fish specialities served with locally grown vegetables. Your hosts will recommend a glass of the local wine of the island: Žlahtina, a dry golden-yellow white wine, a vintage typical of the Vrbnik area. For special occasions there is the sparkling Valomet wine made from Žlahtina and left to mature in the sea at a depth of 40 metres.

In addition to its good road connection with the mainland, Krk has another advantage when it comes to transport. In the immediate vicinity of Omišalj, there is an airport that can receive large aircraft and groups of visitors from distant destinations. This is an important factor for cruise organisers, because it means that Krk can be an interesting embarking and disembarking harbour.

The island of Krk also offers some interesting opportunities for daytrips. A visit to Košljun and its Franciscan monastery is always an experience to remember. A walk along the narrow lanes of the ancient town of Vrbnik, including the "narrowest street in the world" (not recommended to those who weigh over 90 kg!), followed by a visit to the excellent wine cellars with their renowned Žlahtina wine can be as equally exciting as a visit to Baška and the Church of St. Lucy to admire the Baška Tablet, a symbol of the genesis of Croatian literacy. The cave of Biserujka and the ancient town of Omišalj, as well as the Dobrinj and Dubašnica (Malinska) areas, with their excellent taverns where you can sample homemade Šurlice pasta served with various sauces, are always a memorable experience for modern visitors.



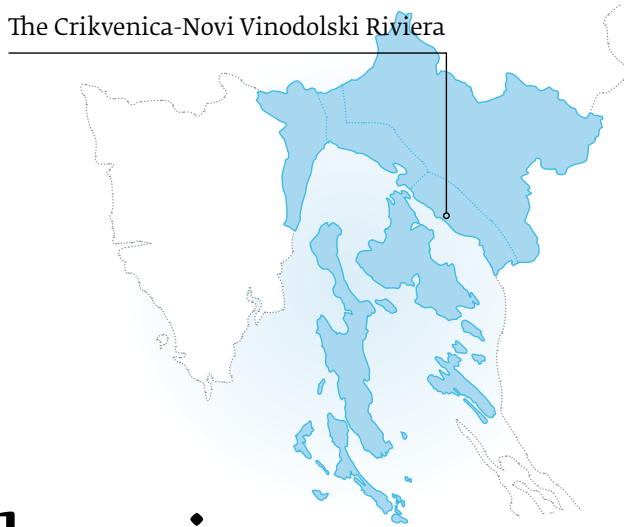
Crikvenica



Castle Drivenik



The Crikvenica-Novi Vinodolski Riviera



The Crikvenica - Novi Vinodolski Riviera

In addition to the two main centres of the Riviera, the coastal towns of Crikvenica and Novi Vinodolski, this thirty kilometre-long stretch of coast includes a string of small towns and villages distinguished by their rich history and a tradition of welcoming visitors dating back more than 120 years. The area's beautiful sea and secluded beaches, its mountainous hinterland providing refreshment even on the hottest summer days, and the unique combination of Mediterranean and mountainous climatic and gastronomic features gives this Riviera great potential for the further development of tourism.

History

Let us remember that in 1288 the famous Vinodol Law was signed in Novi Vinodolski. This was a standardised, codified list of legal practices in nine

settlements of the time (Trsat, Grobnik, Hreljin, Drivenik, Belgrad, Grižane, Bribir, Novi Vinodolski and Ledenice). This is the oldest Croatian legal document, whose value on a European scale can be seen by the fact that a similar law was signed in the Swiss cantons (with approximately the same population and a similar area) three years later in 1291.

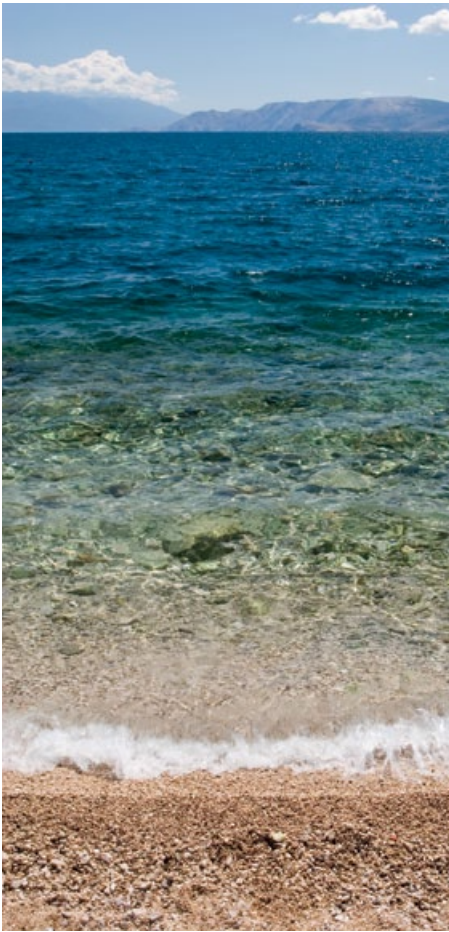
Surroundings

Today, the tourism offer in Crikvenica, Novi Vinodolski and the series of smaller tourist resorts on the coast (Dramalj, Jadranovo, Selce and Povile) is further enhanced by the offer in the villages of the hinterland, such as Bribir, Drivenik, Tribalj, Grižane and other smaller hamlets further up in the mountains. Apart from several smaller high-class family hotels, accommodation is of-

fered in some private houses, but here we are talking about individual tourism for people who know how to enjoy the peace of nature and the hospitality of their hosts. Tribalj is also an excellent paragliding destination for lovers of this kind of excitement. However, Crikvenica and Novi Vinodolski offer a series of comfortable hotels, including specialised resorts, for a more demanding clientele.

Events

Just one kilometre from the coast, the beautiful vineyards in the Vinodol valley start. Over the last twenty years, these vineyards have been restored and today represent a distinctive feature of the Crikvenica-Novi Vinodolski Riviera. Sampling of the excellent wines and delicious specialities can be organised even for larger groups. In recent years,



Interesting facts

- In 1288 the famous Vinodol Law was signed in Novi Vinodolski
- Sampling of the excellent wines and delicious specialities can be organised in the beautiful vineyards
- Daytrips can be organized to the national parks of Plitvice Lakes, Northern Velebit and Risnjak

Crikvenica port technical data, contacts and other info can be found on page 29

another ancient tradition has been brought back to life: the selection of the Rose of Vinodol, the most beautiful and diligent girl at the wine harvest. Historical evidence reveals the existence of this tradition up to 1880, after which records disappear. This event is today a unique tourist attraction and a great chance for visitors and their hosts to have fun.

Outdoor

The Crikvenica and Novi Vinodolski Riviera also offer possibilities for daytrips to the national parks of Plitvice Lakes, Northern Velebit and Risnjak, and to Croatia's capital Zagreb, or to the famous Postojna Caves in neighbouring Slovenia. A local trip to the so-called Glass Chapel in the village of Omar, about 20 kilometres from Novi Vinodolski, is also a unique experience not to be missed.



General info

International country code for Croatia

+385

GMT TIME

Local time: UTC

Summer time period:

27 March, 1:00 AM - 30th August, 1:00 AM

TIDES

Tide medium amplitudes range from 0.3 m to 0.5 m

IMMIGRATION & VISAS

Visa is required for all stated nationalities. Except Serbia, Montenegro. Russia during tourism season.

Visas required for: Afganistan, Albanija, Alger, Angola, Antigua and Barbuda, Armenija, Azerbedjan, Bahama, Bahrein, Bangladeš, Barbados, Belize, Benin, Bielorusija, Bocvana, Burkina Faso, Burundi, Butan, Côte d'Ivoire, Chad, Dominique, Rep. Dominicana, Džibuti, Egypt, Equador, Eq. Guinea, Eritrea, Ethiopia, Fiji, Philipines, Gabon, Gambia, Ghana, Grenada, Grusia, Guianana, Guine, Guinea Bisau, Haiti, India, Indonesia, Iraq, Iran, East Timor, Jamaica, Yemen, Jordan, South Africa, Cabo Verde, Cambodia, Camerun, Qatar, Kazakstan, Kenia, China, Kirigistan, Kiribati, Columbia, Comori, Congo, DR Congo, North Corea, Cuba, Kuwait, Laos, Lesoto, Libanon, Liberia, Libia, Madagascar, Malavi, Maldives, Mali, Morocco, Marshalla Islands, Mauritius, Mauritania, Micronesia, Mianmar, Moldova, Mongolia, Mosambique, Namibia, Nepal, Niger, Nigeria, Oman, Pakistan, Palau, Papua New Guinea, Peru, Rwanda, Russia, Salomon's islands, Samoa, Saudian Arabia, Seycheles, Senegal, Sierra Leone, Siria, Somalia, Serbia and Montenegro, Central African Republic, Sudan, Surinam, Kraljevina Svazi, Sveta Lucija, Sveti Kristofor i Nevis, Demokratska Republika Sveti Toma i Prinsipe, Sveti Vincent i Grenadini, Demokratska Socijalistička Republika Šri Lanka, Republika Tadžikistan, Kraljevina Tajland, Tanzania, Togo, Tonga, Trinidad and Tobago, Tunis, Turkmenistan, Tuvalu, Uganda, UAE, Ukraine, Uzbekistan, Vanuatu, Vietnam, Zambija, Zimbabwe.

Collective (party) passport valid:

Yes, but with collective visa if required (5 to 50 persons)

Passports inspected: Selective checking

Passports stamped: No

Passports collected by Purser or retained by passengers: N/A

Transit Passengers required to take

passports ashore: Any travelling document

Landing Cards issued: NO

Formalities that apply to Crew to go ashore: If Visa is required landing card will be issued

Pier/police authorities recognize & accept

Crew ID cards: NO

CURRENCY & MONEY REGS.

Local currency: KUNA

Approx exchange rate to \$US:

5,20 kn per USD

\$US and € Euro available if required: yes

Travellers Cheques: yes

Passengers need passports to cash

Travellers Cheques: yes

Major Credit Cards generally accepted: several

DRINKING WATER & UNSAFE FOOD

Is town water supply safe to drink: YES

Should we advise passengers not to drink town water: no

Is there any other food or beverage considered 'risky': NIL

TELEPHONE SERVICES COSTS PHONE CARDS

Cards can be bought in any newspaper shop

Recommended anchorages for ships in the Kvarner area

The eastern and western anchorages are located in front of the port of Rijeka. Passenger ships can anchor here. These anchorages are marked on nautical charts and serve as border crossings where ships from abroad can sail directly. At the anchorages, port authority, police and customs officials can perform the necessary border formalities.

After this, the ship and passengers have free access to the mainland.

The anchorages of Rijeka and also the moorings in the port of Rijeka are under the jurisdiction of Rijeka Port Authority. Yachts are required to take the shortest route and sail into the nearest port that has an international border crossing. This is the port of Mali Lošinj, which is the only one in this area (apart from Rijeka) with a border crossing that is open 24 hours a day.

Ships from abroad may also announce their arrival through a shipping agent and sail to an anchorage in front of some other harbour (for example Rab), and apply at the Harbourmaster's Office, police and customs for approval to land outside the border crossing area. In such cases, the border checks can also be performed at this anchorage. For more detailed information, please contact the police and customs office.

Detailed information on anchorages is available in the following publications: PELJAR I. (PILOT vol. I) and PELJAR ZA MALE BRODOVE I. (ADRIATIC SEA PILOT FOR SMALL SHIPS vol. I).

OPATIJA

In the area of the Opatija Harbourmaster's Office, ships can anchor in front of the harbour of Opatija.

KRK

There is an anchorage for ships in front of Krk harbour about 5 cables south-east of the top of the breakwater. It has a depth of 40 metres. The bottom holds anchor well. Berth: for vessels up to 40 metres in length and with a draught up to 2.8 metres.

Opatija Port

Technical data

RAB

Rab Harbour – Vela Riva
Berthing for ships up to 120 metres in length and with a draught up to 5.5 metres.
Anchorages are also available in the cove of Sv. Eufemija (for ships up to 150 metres in length) and off the NW coast of the Frkanj peninsula (for all ships).

CRES

To visit the town of Cres, ships up to 100 metres in length can anchor in Cres Bay in the area from the dock in Cres shipyard to the ACI Marina, as indicated in the Peljar (Pilot) publication and on nautical charts.

Ships can also dock along the waterfront with a length of 120 metres and a draught of up to 7 metres.

Border formalities and police checks on ship passengers from abroad are performed at the same anchorage.

Smaller ships which are not under customs supervision and want to visit the places of Valun and Martinšćica are allowed to anchor in front of the harbour, provided that they do not disturb other ships and boats when sailing into or out of the harbour.

LOŠINJ

Small yachts and boats can anchor along the western coast of Mali Lošinj Bay, from the INA petrol station (no closer than 200 metres) to the cove of Velopin, and along the eastern coast of the islet of Koludarac at a distance from the shore of about 50 metres.

The permanent border crossing at Mali Lošinj performs border formalities at a 15-metre stone waterfront in the immediate vicinity of the Privlaka Channel (LOŠINJ PLOV marina) in the south-eastern part of Mali Lošinj Bay.

Ships and yachts with a draught larger than 3 metres can carry out border formalities on the customs pier of the new waterfront or at another location upon prior agreement with the border authorities.

In order to perform border formalities, large ships that cannot use the waterfront may, with the prior permission of the Harbourmaster's Office, temporarily anchor in the widest part of Mali Lošinj Bay at a position approximately 600 metres south-east of the Poljana red lighthouse.

EMERGENCY NUMBERS

Fire: 112
Harbor authorities:
+385 (0)51 711 249; Fax 214 031
Pollution Centre: +385 (0)51 214 031
Police: 112
Ambulance: 112
Public Health: 112
Hospital: 112
Sea Rescue: 9155; Fax 312 243

E.T.A.

To be sent by: e-mail
To: Agent, VTMS Rijeka
To be confirmed on VHF radio channel:
VHF 09
When: 2 hours before arrival

PORT R/T VHF

Local Call Frequencies
Approaching Port: Rijeka
VTS: Rijeka
Pilot: Croatia Pilot
Tugs: JPS

NEW REGULATIONS

New or changed regulations since the last Port Information Manual affecting the arrival, departure and stay of the above vessel in this port: There are no new regulations

PILOTAGE

Compulsory pilotage:
Yes for ship over 500 GT
Pilot will board: Near port area
Where: 1 Nm from Opatija
Charges (x vessel, net tonnage):
http://www.cropilot.hr/tarife_luckoen.htm
Charges - Night and Holidays:
http://www.cropilot.hr/tarife_luckoen.htm
Special requirements for pilot:
<http://www.cropilot.hr/pravilaen.htm>

TUGS

Compulsory tugs: NO
Use of ship's Bow thrusters permitted: YES
Number of tugs available: 6
Horsepower of each available tug:
<http://www.jps.hr/english/tegljaci.html>
Tug Charges:
<http://www.jps.hr/english/usluge.html>
Charges - Day:
<http://www.jps.hr/nova-tarifa-2010-en.pdf>
Charges - Night and Holidays:
<http://www.jps.hr/nova-tarifa-2010-en.pdf>
Any additional charges (specify):
<http://www.jps.hr/nova-tarifa-2010-en.pdf>

ARRIVAL & DEPARTURE

Restrictions on times of arrival & departure: No restrictions

CURRENTS & BAD WEATHER

Specific local weather conditions which make arrivals or departures unsuitable or inadvisable at certain times or seasons: page 4-6 in <http://www.portauthority.hr/rijeka/docs/pravilnik-rijeka-en.pdf>

WORKING HOURS

(hours for which overtime is NOT paid for)
Pilot from 06:00 to 22:00
Tugs from 06:00 to 22:00
Linesmen from 06:00 to 22:00
Boatmen from 06:00 to 22:00
Officials from 06:00 to 22:00
Watchmen from 06:00 to 22:00

BERTH DETAILS

Name of Principal Berth: IF IS BERTH 28/29
Number of berths in port: 29

Berth Details:

Berth 1: Length and draft 60/4; Width 30; Height of pier from S.L.: 2.0
Berth 2: Length and draft 110/4,5; Width 30; Height of pier from S.L.: 2.0
Berth 3: Length and draft 60/4; Width 30; Height of pier from S.L.: 2.0

ISPS CODE & WATCHMAN

Approved ISPS plan: YES
Watchmen Compulsory: YES
Compulsory hand baggage scanning: No

GANGWAY & FINGER

Shore Gangway Available: NO
Can Ship gangways be used: YES
Finger Available: NO

AIR DRAUGHT

Bridges or other overhead objects which might obstruct the entry, exit or stay of the Ship in port: NO

ANCHORAGE

Ship required to anchor for Quarantine: NO
Usual anchorage If not berthing in port:
E anchorage area
Anchorages positions available: 2x2 km

Details of each anchorage:

Anchor 1: Distance from shore landing place < than 5' with tender

East Anchorage area: Depth at anchorage 50;
Distance from shore landing place < 1 Nm;
Weather restrictions Southerly wind - Winter period

MOORING BUOYS

Mooring buoys available: NIL

TENDERS

Shore Tenders Compulsory: YES

FUEL

Marine Fuel Oil: YES

Intermediate Fuel Oil: YES

Marine Diesel Oil: YES

Marine Gas Oil: YES

Guaranteed quantity: if ordered before, requested quantity (approx. 10 T)

Pressure per Hose (pumping Speed): standard

GARBAGE

Collected by (barge or truck): YES

Service compulsory: YES

Tax payable if you do not offload: YES

SLUDGE SLOP SEWAGE

Collected by (barge or truck): YES

Price x m3: 130 EUR PLUS TAX ASSISTANCE FEE

MAX 400 m3

POLLUTION REGULATIONS & PENALTIES

Apart from the official pollution regulation, no additional special pollution regulations.

REPAIR FACILITIES ENGINE

Shipyard: several

Dry-dock:

<http://www.lenac.hr/Home.aspx?PageID=58>

Floating Dry-dock:

YES; Length 260 m; Width 34 m; Depth 17 m

Shore Power:

Voltage 440/380; Amps 300/500

MOBILE CRANE and CHERRY PICKER

Mobile crane available at port: YES

Number of cranes: several

Capacity: up 100 T

Company name: Luka Rijeka

Address: Riva 1, 51000 Rijeka

Cherry Picker available at port: YES

Company name: Luka Rijeka

RADIO PRATIQUE

Can Ship receive Radio Pratique: NO

SHIP'S CLEARANCE

Required copies:

Passenger Lists: 2

Crew Lists: 2

Bonded Stores: 0

Provisions: 0

Crew Personal Effects: 0

Arms Declaration: 1

Cargo Declaration: 0

Stowaway Declaration: 1

Narcotics & Spares: 1

Maritime Declaration of Health: 1

Crew Vaccination list (Yellow Fever): 1

Ship's Clearance from Last Port:

last 10 port of calls (1 pc)

PORT HEALTH OFFICER

Title:

Head of the department for border sanitary inspection service; Mirjana Prenc, dr med

Boarding Point:

Ministry of health and social care

Address: Senjsko pristanište 3, 51000 Rijeka

Phone: +385 (0)51 213 865

Fax: +385 (0)51 213 865

Cellular: +385 (0)99 239 1687

PORT IMMIGRATION OFFICER

Title: POSTAJA POMORSKE POLICIJE RIJEKA

Boarding Point: AS REQUIRED

Address: RIVA 16, RIJEKA

Phone: 0038551337325

Fax: 0038551439170

Email: pomorska.policija.ri@mup.hr

PORT CUSTOMS OFFICER

Title: Carinarnica Rijeka

Boarding Point: CI Luka Rijeka

Address: Senjsko pristanište bb

Phone: +385 (0)51 525 172

Fax: +385 (0)51 525 106

P.F.S.O.

(Port Facility Security Officers)

Title: PROTECT (Protecting and Guarding Services)

Boarding Point: Rijeka port

Address:

Vukovarska 21 - 51 000 Rijeka; Croatia

Phone: +385 (0)51 358 555

Fax: +385 (0)51 675 610

Email: protect@protect.hr

CUSTOMS REQUISITES & REGULATIONS

Customs officials seal the following:

Main Bar: No; if ship is not sailing between croatian ports

Other Bars: No

Shops: Yes

Storerooms: Yes

Copies of forms presented to Customs on vessel arrival:

Crew Lists: 2

Passenger Lists: 2

Personal Effects of Crew: 2

Bonded Stores: 2

Provisions: 2

Ships Spares: 2

Arms Lists: 2

Cargo Declaration: 2

Narcotics Lists: 2

Ports of Call lists: 2

SEAMEN'S BOOKS

Seamen's Books recognized for embarking & disembarking Crew: YES

If passport has expired, can crew disembark (in transit) with current S. Book: YES

Type of Seaman's book accepted:

Crew Nationality: YES

Vessel nationality: YES

LANDING & DEBARKING PAX

Authorities charge a Landing and/or boarding fee for passengers in the following categories:

Pax landing for sightseeing & returning to ship: NO

Pax landing for overland tours & rejoining ship in a subsequent port: NO

Pax permanently disembarking at this port or joining the vessel there to take part in the rest of the cruise: NO

PASSPORT

Balance of passport validity required for the following:

Transit passengers: IF VISA REQUIRED PASSPORT MUST EXCEED VISA VALIDATION PERIOD FOR MIN. 3 MONTHS

Disembarking passengers: IF VISA REQUIRED PASSPORT MUST EXCEED VISA VALIDATION PERIOD FOR MIN. 3 MONTHS

Crew (if disembarking in this port in transit): IF VISA REQUIRED PASSPORT MUST EXCEED VISA VALIDATION PERIOD FOR MIN. 3 MONTHS

LANDING CARDS

Landing Cards are necessary as follows:

For Passengers NO

For Crew NO

MORTUARY FACILITY

KOMUNALAC OPATIJA

tel: +385 (0)51 271 113

fax +385 (0)51 701 245

www.komunalac-opatija.hr/groblja

DRUGS TESTING & PENALTIES

NZJZ-PGŽ, Rijeka, Odsjek za izvanbolničko liječenje ovisnosti, Kalvarija 8

Telephone: +385 (0)51 327 160

Fax: +385 (0)51 327 170

VACCINATIONS

Endemic disease in your port: NONE

MEDICAL FACILITIES

KBC-The clinical hospital centre is in the vicinity of the port, any specific doctors can be arranged upon request

Public Hospital:

Name of Hospital: KBC Rijeka - Clinical

Hospital center Rijeka

Address: Kresimirova 42

Telephone: +385 (0)51 658 111

Dental Surgeon

Name of Dentist: dr vanja marković

Address: Table 22

BANK SERVICE

Bank and money exchange services can be provided on board.

There are many exchange offices in the vicinity of the terminal.

TAXIS & SHUTTLE BUSES

Are taxis available: YES

KM from usual Pier to Town Centre: 50 m

Usual cost from Ship to centre: no costs

Is a Shuttle Bus service available: yes if organized with local shore agent

No. of Buses available and their capacity: The piers are situated close to the city centre

POST OFFICE

Location (address): Very close to the port

Hours of operation: 08h - 20 h

Is there an all-night long distance

telephone service: Yes

INTERNET & E-MAIL

Is a public Internet & E-mail service

available: YES

Approx. cost of Internet access for 1 hour:

Free of charge

PUBLIC TRANSPORT

How far is it to the Ship's berth: Very close to the city centre

What time does Public Transport end (last bus, train etc): 12:00 PM

Is Public Transport considered 'Safe': Yes

CHURCHES

Catholic: YES; Park svetog Jakova 2

Moslem: non/yes

Lutheran: YES

Baptist: YES

AIRPORT

Approx. time in taxi: 50 MIN

KM to International airport from Ship:

50 km by road

Approx. time in taxi: 50 MIN

TOURIST INFORMATION

Public Tourist Information office:

Very close to the port

Address: Vladimira nazora 3

Telephone: +385 (0)51 271 710

Fax: +385 (0)51 271 699

Email: info@opatija-tourism.hr

Days & Hours open: Every day 08h - 20h

Saturday: 08-13.30h

SHOPS

KM from Ship to Shopping Centre:

Very close, distances in meters

By walking, how many minutes:

Five minutes

Shopping Hours: 08h - 20h/21h

Which days do shops not open:

All days open

Best way to get to shops: On foot

OTHER SERVICES

BUREAU VERITAS OFFICE: BV Croatia

Address: Riva 16/V, 51000 Rijeka, Croatia

Phone of BV office: +385 (0)51 213 672

Fax of BV office: +385 (0)51 211 067

Email of BV Office: office.croatia@hr.bureauveritas.com

RINA OFFICE: RINA JADRAN d.o.o.

Address: Flaciusova 1, 52100 Pula, Croatia

Notes: Attached to Trieste (I) Office

Phone of RINA office: +385 (0)52 373650

Fax of RINA office: +385 (0)52 373284

Email of RINA Office: jadran.office@rina.org

DIVING SERVICES: AQUASUB

Address: Hosti 57, 51000 Rijeka, Croatia

Phone of Diving Company office:

+385 (0)51 269 869

Fax of Diving Company office:

+385 (0)51 260 129

Email of Diving Company Office:

aquasub@ri.t-com.hr



Rijeka Port

Technical data

EMERGENCY NUMBERS

Fire: 112
Harbor authorities:
+385 (0)51 214 031; Fax 313 265
Pollution Centre: +385 (0)51 214 031
Police: 112
Ambulance: 112
Public Health: 112
Hospital: 112
Sea Rescue: 9155; Fax 312 243

CONSULATE or EMBASSY CONTACTS

Italy: +385 (0)51 355 200
Germany: +385 (0)51 321 044
Croatia: +385 (0)51 315 033

E.T.A.

To be sent by: e-mail
To: Agent, VTMS Rijeka
To be confirmed on VHF radio channel:
VHF 09
When: 2 hours before arrival

CHART POSITION

BA - 202, 204

PORT R/T VHF

Local Call Frequencies
Approaching Port: Rijeka
VTS: Rijeka
Pilot: Croatia Pilot
Tugs: JPS

NEW REGULATIONS

New or changed regulations since the last Port Information Manual affecting the arrival, departure and stay of the above vessel in this port: There are no new regulations

PILOTAGE

Compulsory pilotage:
Yes for ship over 500 GT
Pilot will board: Near port area
Where: 1 Nm from Opatija
Charges (x vessel, net tonnage):
http://www.cropilot.hr/tarife_luckoen.htm
Charges - Night and Holidays:
http://www.cropilot.hr/tarife_luckoen.htm
Special requirements for pilot:
<http://www.cropilot.hr/pravilaen.htm>

TUGS

Compulsory tugs: NO
Use of ship's Bow thrusters permitted: YES
Number of tugs available: 6

Horsepower of each available tug:

<http://www.jps.hr/english/tegljaci.html>

Tug Charges:

<http://www.jps.hr/english/usluge.html>

Charges - Day:

<http://www.jps.hr/nova-tarifa-2010-en.pdf>

Charges - Night and Holidays:

<http://www.jps.hr/nova-tarifa-2010-en.pdf>

Any additional charges (specify):

<http://www.jps.hr/nova-tarifa-2010-en.pdf>

ARRIVAL & DEPARTURE

Restrictions on times of arrival & departure: No restrictions

CURRENTS & BAD WEATHER

Specific local weather conditions which make arrivals or departures unsuitable or inadvisable at certain times or seasons: page 4-6 in <http://www.portauthority.hr/rijeka/docs/pravilnik-rijeka-en.pdf>

WORKING HOURS

(hours for which overtime is NOT paid for)

Pilot from 06:00 to 22:00

Tugs from 06:00 to 22:00

Linesmen from 06:00 to 22:00

Boatmen from 06:00 to 22:00

Officials from 06:00 to 22:00

Watchmen from 06:00 to 22:00

BERTH DETAILS

Name of Principal Berth: IF IS BERTH 28/29

Number of berths in port: 29

Berth Details:

Berth 30A (Ro-Ro): Length and draft 180 / 7,0; Width 15; Fender type 2 Floathing (6,5x5,0); Height of pier from S.L.: 1,7; UN LOCATOR CODE: HRRJK; POER ID NUMBER: 24951; PORT FACILITY NUMBER: 0003

Berth 31: Length and draft 150 / 7,0; Width 15; Fender type 2x pneumatic 2,5x1,4; Height of pier from S.L.: 1,7

Berth 32/33: Length and draft 300 / 7,0; Width 14; Fender type Arch 1,0 x 0,6; Height of pier from S.L.: 1,2

ISPS CODE & WATCHMAN

Approved ISPS plan: YES

Watchmen Compulsory: YES

Compulsory hand baggage scanning: No

GANGWAY & FINGER

Shore Gangway Available: NO

Can Ship gangways be used: YES

Finger Available: NO

AIR DRAUGHT

Bridges or other overhead objects which might obstruct the entry, exit or stay of the Ship in port: NO

LARGEST VESSEL TO ARRIVE IN THIS PORT

Container vessels 305 m

ANCHORAGE

Ship required to anchor for Quarantine: NO

Usual anchorage If not berthing in port:

E anchorage area

Anchorage positions available: 4 X 4 Nm

Details of each anchorage:

Anchor 1: Distance from shore landing place < than 5' with tender

East Anchorage area: Depth at anchorage 54 - 64 m; Distance from shore landing place < 1 Nm; Weather restrictions Southerly wind - Winter period

MOORING BUOYS

Mooring buoys available: NIL

TENDERS

Shore Tenders Compulsory: YES

Cost per Passenger and Crew member for Ship's Tenders: First month (approx. 4 calls) are free of charge.

FUEL

Marine Fuel Oil: YES

Intermediate Fuel Oil: YES

Marine Diesel Oil: YES

Marine Gas Oil: YES

Guaranteed quantity: if ordered before, requested quantity (approx. 10 T)

Pressure per Hose (pumping Speed): standard

FRESH WATER

Delivery rate per hour: 20 m³

Price x m³: 6,65Eur + export customs costs 29 Eur

GARBAGE

Collected by (barge or truck): YES

Price x m³:

90 Eur per garbage container 5 m³

Service compulsory: YES

Tax payable if you do not offload: YES

SLUDGE SLOP SEWAGE

Collected by (barge or truck): YES
Price x m3:
130 EUR PLUS TAX ASSISTANCE FEE
MAX 400 m3

POLLUTION REGULATIONS & PENALTIES

Apart from the official pollution regulation, no additional special pollution regulations.

REPAIR FACILITIES ENGINE

Shipyard: several
Dry-dock:
<http://www.lenac.hr/Home.aspx?PageID=58>
Floating Dry-dock:
YES; Length 260 m; Width 34 m; Depth 17 m
Shore Power:
Voltage 440/380; Amps 300/500
Underwater photography - survey: several
Authorized Diving Service: several
Marine Electrical Engineers: several
Emergency Generator: several
Steel Carpenter: several
Heavy Marine Engineering: several

MOBILE CRANE and CHERRY PICKER

Mobile crane available at port: YES
Number of cranes: several
Capacity: up 100 T
Company name: Luka Rijeka
Address: Riva 1, 51000 Rijeka

Cherry Picker available at port: YES
Company name: Luka Rijeka

PORT CHARGES

Per Day: first month free of charge
Port Dues alongside Pier:
first month free of charge
Port Dues at Anchorage:
first month free of charge
Light Dues: like any Croatian port

RADIO PRATIQUE

Can Ship receive Radio Pratique: NO

SHIP'S CLEARANCE

Required copies:
Passenger Lists: 2
Crew Lists: 2
Bonded Stores: 0
Provisions: 0
Crew Personal Effects: 0
Arms Declaration: 1

Cargo Declaration: 0
Stowaway Declaration: 1
Narcotics & Spares: 1
Maritime Declaration of Health: 1
Crew Vaccination list (Yellow Fever): 1
Ship's Clearance from Last Port:
last 10 port of calls (1 pc)

PORT HEALTH OFFICER

Title:
Head of the department for border sanitary inspection service; Mirjana Prenc, dr med
Boarding Point:
Ministry of health and social care
Address: Senjsko pristanište 3, 51000 Rijeka
Phone: +385 (0)51 213 865
Fax: +385 (0)51 213 865
Cellular: +385 (0)99 239 1687

PORT IMMIGRATION OFFICER

Title: POSTAJA POMORSKE POLICIJE RIJEKA
Boarding Point: AS REQUIRED
Address: RIVA 16, RIJEKA
Phone: +385 (0)51 337 325
Fax: +385 (0)51 439 170
Email: pomorska.policija.ri@mup.hr

PORT CUSTOMS OFFICER

Title: Carinarnica Rijeka
Boarding Point: CI Luka Rijeka
Address: Senjsko pristanište bb
Phone: +385 (0)51 525 172
Fax: +385 (0)51 525 106

P.F.S.O. (Port Facility Security Officers)

Title: PROTECT (Protecting and Guarding Services)
Boarding Point: Rijeka port
Address:
Vukovarska 21 - 51 000 Rijeka; Croatia
Phone: +385 (0)51 358 555
Fax: +385 (0)51 675 610
Email: protect@protect.hr

STORES & PROVISIONS

<http://www.portauthority.hr/rijeka/en/services/ship-supply.html>

CUSTOMS REQUISITES & REGULATIONS

Customs officials seal the following:
Main Bar: No; if ship is not sailing between croatian ports
Other Bars: No
Shops: Yes

Storerooms: Yes
Copies of forms presented to Customs on vessel arrival:
Crew Lists: 2
Passenger Lists: 2
Personal Effects of Crew: 2
Bonded Stores: 2
Provisions: 2
Ships Spares: 2
Arms Lists: 2
Cargo Declaration: 2
Narcotics Lists: 2
Ports of Call lists: 2

SEAMEN'S BOOKS

Seamen's Books recognized for embarking & disembarking Crew: YES
If passport has expired, can crew disembark (in transit) with current S. Book: YES
Type of Seaman's book accepted:
Crew Nationality: YES
Vessel nationality: YES

LANDING & DEBARKING PAX

Authorities charge a Landing and/or boarding fee for passengers in the following categories:
Pax landing for sightseeing & returning to ship: NO
Pax landing for overland tours & rejoining ship in a subsequent port: NO
Pax permanently disembarking at this port or joining the vessel there to take part in the rest of the cruise: NO

PASSPORT

Balance of passport validity required for the following:
Transit passengers: IF VISA REQUIRED
PASSPORT MUST EXCEED VISA VALIDATION PERIOD FOR MIN. 3 MONTHS
Disembarking passengers: IF VISA REQUIRED
PASSPORT MUST EXCEED VISA VALIDATION PERIOD FOR MIN. 3 MONTHS
Crew (if disembarking in this port in transit): IF VISA REQUIRED
PASSPORT MUST EXCEED VISA VALIDATION PERIOD FOR MIN. 3 MONTHS

LANDING CARDS

Landing Cards are necessary as follows:
For Passengers NO
For Crew NO

MORTUARY FACILITY

KD Kozala
tel: +385 (0)51 514 300
fax +385 (0)51 514 201
e-mail: direktorica@kd-kozala.hr

DRUGS TESTING & PENALTIES

NZJZ-PGŽ, Rijeka, Kalvarija 8
Telephone: +385 (0)51 327 160
Fax: +385 (0)51 327 170

VACCINATIONS

Endemic disease in your port: NONE

MEDICAL FACILITIES

KBC-The clinical hospital centre is in the vicinity of the port, any specific doctors can be arranged upon request

Public Hospital:

Name of Hospital: KBC Rijeka - Clinical Hospital center Rijeka
Address: Kresimirova 42
Telephone: +385 (0)51 658 111

Dental Surgeon

Name of Dentist: dr vanja marković
Address: Table 22

BANK SERVICE

Bank and money exchange services can be provided on board.
There are many exchange offices in the vicinity of the terminal.

TAXIS & SHUTTLE BUSES

Are taxis available: YES
KM from usual Pier to Town Centre: 50 m
Usual cost from Ship to centre: no costs
Is a Shuttle Bus service available: yes if organized with local shore agent
No. of Buses available and their capacity:
The piers are situated close to the city centre

POST OFFICE

Location (address): Very close to the port
Hours of operation: 08h - 20 h
Is there an all-night long distance telephone service: Yes

INTERNET & E-MAIL

Is a public Internet & E-mail service available: YES
Address: Ri info - information center of Rijeka Town, Korzo 18b
Hours of operation: 08 h - 20 h
Approx. cost of Internet access for 1 hour:
Free of charge

SHUTTLE BUS

No need for shuttle buses to and from the city to and from terminal/doc gate

PUBLIC TRANSPORT

How far is it to the Ship's berth: Very close to the city centre
What time does Public Transport end (last bus, train etc): 12:00 PM
Is Public Transport considered 'Safe': Yes

CHURCHES

Catholic: YES; Kapucinske stube 5
Moslem: non/yes; Grivica 6
Lutheran: YES; Ivana Dežmana 3
Baptist: YES; Slavka Krautzeka 76

AIRPORT

Approx. time in taxi: 30 MIN
KM to International airport from Ship:
40 km by road
Approx. time in taxi: 30 MIN

TOURIST INFORMATION

Public Tourist Information office:
Very close to the port
Address: Korzo 33 a
Telephone: +385 (0)51 335 882
Days & Hours open:
Every day 08h - 20h
Saturday: 08-13.30h

SHOPS

KM from Ship to Shopping Centre:
Very close, distances in meters
By walking, how many minutes:
Five minutes
Shopping Hours: 08h - 20h/21h
Which days do shops not open:
All days open
Best way to get to shops: On foot
Suggested special items passengers should buy: the Morcic - the most popular ornament to buy in Rijeka

OTHER SERVICES

ABS Office: Rijeka Port
Address:
Trg Ivana Koblera, 51000 Rijeka Croatia
Phone of ABS office: 385 51 333019
Fax of ABS office: 385 51 211339
Email of ABS Office: ABSRijeka@eagle.org

BUREAU VERITAS OFFICE: BV Croatia
Address: Riva 16/V, 51000 Rijeka, Croatia
Phone of BV office: +385 (0)51 213 672
Fax of BV office: +385 (0)51 211 067
Email of BV Office: office.croatia@hr.bureauveritas.com

RINA OFFICE: RINA JADRAN d.o.o.
Address: Flaciusova 1, 52100 Pula, Croatia
Notes: Attached to Trieste (I) Office
Phone of RINA office: +385 (0)52 373650
Fax of RINA office: +385 (0)52 373284
Email of RINA Office: jadran.office@rina.org

DIVING SERVICES: AQUASUB
Address: Hosti 57, 51000 Rijeka, Croatia
Phone of Diving Company office:
+385 (0)51 269 869
Fax of Diving Company office:
+385 (0)51 260 129
Email of Diving Company Office:
aquasub@ri.t-com.hr



Mali Lošinj Port

Technical data

EMERGENCY NUMBERS

Fire: 231448

Harbour authorities:

+385 (0)51 232 020, 231 438

Police: +385 (0)725 092

Ambulance: +385 (0)51 724 094

Hospital: +385 (0)51 776 969

Other emergency number: 112

E.T.A.

To be sent by: e-mail

To: lucka.malilosinj@inet.hr

To be confirmed on VHF radio channel: 16, 9

When: 7 am-15 pm

CHART POSITION

44 32,2 N, 014 28,2 E

PORT R/T VHF

16, 9

NEW REGULATIONS

Mali Lošinj port is the port which is open for traffic. Jurisdictions of the port has Port Authority Mali Losinj.

PILOTAGE

Compulsory pilotage:

Yes for ship over 500 GT

Pilot will board: pilotage is compulsory when the ship moves changing the quay in the port using its own propulsion engines

Where: In the port area

Charges (x vessel, net tonnage):

above 500 BT

Charges - Night and Holidays:

calculated according to the decision on the amount of the port charges

Special requirements for pilot:

when the pilot boarded the ship is required to make peljarskoj leeward boat, a pilot to ensure a safe climb aboard the prescribed pilot ladder, or a combination sizom peljarskih ladder and Siza with the appropriate equipment and lighting at night

TUGS

Compulsory tugs: Yes, in shipyard

Use of ship's Bow thrusters permitted: Yes, in shipyard

ARRIVAL & DEPARTURE

Restrictions on times of arrival &

departure: Before arriving, is necessary to inform the Port authority and Harbour master

CURRENTS & BAD WEATHER

Specific local weather conditions which make arrivals or departures unsuitable or unadvisable at certain times or seasons: Yes, especially, during the winter season in the case of big storm and huge wind.

WORKING HOURS

(hours for which overtime is NOT paid for)

Officials from 08:00 to 21:00

Watchmen from 07:00 to 21:00

ISPS CODE & WATCHMAN

Approved ISPS plan: YES

GANGWAY & FINGER

Shore Gangway Available: YES

Can Ship gangways be used: YES

Finger Available: NO

ANCHORAGE

Ship required to anchor for Quarantine: YES

Usual anchorage If not berthing in port: in port area

Anchorage positions available: few

Details of each anchorage:

Anchor 1: Distance from shore landing place < than 5' with tender

MOORING BUOYS

Mooring buoys available: 35

TENDERS

Shore Tenders Compulsory: NO

Can Ship's Tenders be used: NO

FUEL

Marine Fuel Oil: YES

Intermediate Fuel Oil: YES

Marine Diesel Oil: YES

Guaranteed quantity: if ordered before, requested quantity (approx. 10 T)

Pressure per Hose (pumping Speed): standard

FRESH WATER

Price x m3: 25 kn

REPAIR FACILITIES ENGINE

Shipyard: YES

Dry-dock: YES

Floating Dry-dock: YES

MOBILE CRANE and CHERRY PICKER

Mobile crane available at port: No

Cherry Picker available at port: No

SHIP'S CLEARANCE

Required copies:

Passenger Lists: 8

Crew Lists: 8

Bonded Stores: 4

Provisions: 2

Crew Personal Effects: 4

Arms Declaration: 1

Cargo Declaration: 1

Stowaway Declaration: 2

Narcotics & Spares: 2

Maritime Declaration of Health: 2

Crew Vaccination list (Yellow Fever): 1

Ship's Clearance from Last Port: 1

P.F.S.O.

(Port Facility Security Officers)

Title: Mr. Gracijano Petrinić

Address: Priko 64

Phone: +385 (0)51 232 020

Fax: +385 (0)51 520 309

Cellular: +385 (0)98 415 400

Email: lucka.malilosinj@inet.hr

STORES & PROVISIONS

Along the urban coast of the city of Mali Lošinj

CUSTOMS REQUISITES & REGULATIONS

Copies of forms presented to Customs on vessel arrival:

Crew Lists: 8

Passenger Lists: 8

Personal Effects of Crew: 4

Bonded Stores: 4

Provisions: 1

Ships Spares: 4

Arms Lists: 2

Cargo Declaration: 1

Narcotics Lists: 1

Ports of Call lists: 1

SEAMEN'S BOOKS

Type of Seaman's book accepted:

Crew Nationality: YES

Vessel nationality: YES

Rab Port

Technical data

LANDING & DEBARKING PAX

Authorities charge a Landing and/or boarding fee for passengers in the following categories:
Pax landing for sightseeing & returning to ship: NO
Pax landing for overland tours & rejoining ship in a subsequent port: NO
Pax permanently disembarking at this port or joining the vessel there to take part in the rest of the cruise: NO

PASSPORT

Balance of passport validity required for the following:
Transit passengers: YES

VACCINATIONS

Endemic disease in your port: NONE

MEDICAL FACILITIES

Dom zdravlja Mali Lošinj
Telephone: +385 (0)51 231 824

BANK SERVICE

Neasrest bank is in the main square
Bank opening hours ashore: 8 AM-20PM

TAXIS & SHUTTLE BUSES

Are taxis available: No
Is a Shuttle Bus service available: yes if organized with local shorex agent

POST OFFICE

Location (address): near the main square
Distance from Ship: few meters
All-night long distance telephone service: No

INTERNET & E-MAIL

Address: near the main square, behind the fish market

CHURCHES

Catholic: YES (6)

TOURIST INFORMATION

Public Tourist Information office:
Telephone: +385 (0)51 335 882

SHOPS

KM from Ship to Shopping Centre:
Very close, distances in meters
Suggested special items passengers should buy: figs, olive oil

EMERGENCY NUMBERS

Fire: +385 (0)51 724 372
Harbour authorities: +385 (0)51 725 938
Police: +385 (0)51 231 822
Ambulance: 94
Public Health: +385 (0)51 231 824
Hospital: 112
Sea Rescue: 62200000

E.T.A.

To be sent to: Agent

CHART POSITION

100-1% HHI Split

PORT R/T VHF

Local Call Frequencies
VTS: 16

NEW REGULATIONS

New or changed regulations since the last Port Information Manual affecting the arrival, departure and stay of the above vessel in this port: There are no new regulations

PILOTAGE

Compulsory pilotage:
Yes for ship over 500 GT

ARRIVAL & DEPARTURE

Restrictions on times of arrival & departure: No restrictions

CURRENTS & BAD WEATHER

Specific local weather conditions which make arrivals or departures unsuitable or inadvisable at certain times or seasons: None

WORKING HOURS

(hours for which overtime is NOT paid for)
Pilot from 00:00 to 00:00
Boatmen from 00:00 to 00:00
Officials from 07:00 to 15:00

BERTH DETAILS

Name of Principal Berth: long side
Number of berths in port: 1

Berth Details:

Length and draft 120; Width 30m

LARGEST VESSEL TO ARRIVE IN THIS PORT

120 m

ANCHORAGE

Ship required to anchor for Quarantine: yes
Usual anchorage If not berthing in port: in front of the porth
Anchorage positions available: 2

Details of each anchorage:

Anchor 1: position 44° 45,12/14° 45,86; Depth at anchorage 18 m; Distance from shore landing place < than 5' with tender; No weather restrictions

East Anchorage area: position 44° 44,90/14° 45,02; Depth at anchorage 30 m; Distance from shore landing place 20'

TENDERS

Shore Tenders Compulsory: YES
Cost per Passenger and Crew member for Ship's Tenders: First month (approx. 4 calls) are free of charge.

FUEL

Marine Fuel Oil: YES
Marine Diesel Oil: YES
Marine Gas Oil: YES
Guaranteed quantity: if ordered before, requested quantity (approx. 10 T)
Pressure per Hose (pumping Speed): standard

FRESH WATER

Delivery rate per hour: 6 m³
Price x m³: 40,00 kn

GARBAGE

Price x m³: 500,00 kn
Service compulsory: no
Tax payable if you do not offload: no

SLUDGE SLOP SEWAGE

Collected by (barge or truck): no

POLLUTION REGULATIONS & PENALTIES

Apart from the official pollution regulation, no additional special pollution regulations.

REPAIR FACILITIES ENGINE

Shipyard: Yes
Dry-dock: Yes
Floating Dry-dock: No
Shore Power:
Voltage 380/220; Amps 63
Authorized Diving Service: Ronilačke usluge Josip Ribarić; tel. +385 (0)91 205 2501

Crikvenica Port

Technical data

Marine Electrical Engineers: Pičuljan Marine d.o.o.; tel. +385 (0)51 279 900

Steel Carpenter: Pičuljan Marine d.o.o.; tel. +385 (0)51 279 900

P.F.S.O. (Port Facility Security Officers)

Title: Vanja Debelić

Fax: +385 (0)51 725 938

Cellular: +385 (0)98 421 262

Email: lucka-uprava-rab@inet.hr

STORES & PROVISIONS

Name: Rab Komerc

Phone: +385(0)51 774 950

Email: rabkomerc@inet.hr

Fax: +385(0)51 725 613

MORTUARY FACILITY

Rab cemetery

MEDICAL FACILITIES

KBC-The clinical hospital centre is in the vicinity of the port, any specific doctors can be arranged upon request

Public Hospital:

Dom zdravlja Rab

Address: Palit 20

Telephone: +385 (0)51 776 969

Fax: +385 (0)51 724 375

Pharmaceutical supplier:

Ljekarna Načeta

Address: Srednja ulica 3

BANK SERVICE

Nearest bank: 30 m

TAXIS & SHUTTLE BUSES

Are taxis available: YES

Is a Shuttle Bus service available: yes if organized with local shore agent

POST OFFICE

Location (address): P.C.Mali Palit

Distance from ship: 5 min

Hours of operation: 07 h - 20 h

INTERNET & E-MAIL

Is a public Internet & E-mail service available: YES

Address: Trg M. Arba

Hours of operation: 0 h - 24 h

SHUTTLE BUS

No need for shuttle buses to and from the city to and from terminal/doc gate

PUBLIC TRANSPORT

Public Transport: BUS

How far is it to the Ship's berth: 0 km

Is Public Transport considered 'Safe': Yes

AIRPORT

Approx. time in taxi: 2 h

KM to International airport from Ship: 100 km

TOURIST INFORMATION

Public Tourist Information office:

Trg Municipium Arba

www.tzg-rab.hr

SHOPS

KM from Ship to Shopping Centre: 50 m

By walking, how many minutes: 2 min

Suggested special items passengers should buy: Rab cake, Sage

honey, Brandy, Wine, olive oil

TERMINAL

Passenger terminal: no

Berth CAN be decorated or enhanced with flags, musical band or other material: yes

Baggage scanning: no

Checkpoint for Passenger Landing: yes

Port Security Plan: State

OTHER SERVICES

DIVING SERVICES:

Diving service Josip Ribarić

Telephone: +385 (0)51 724 637

EMERGENCY NUMBERS

Fire: 112

Harbour authorities:

+385 (0)51 241 577; Fax: 241 577

Pollution Centre: +385 (0)51 214 031

Police: 112

Ambulance: 112

Public Health: 112

Hospital: 112

Sea Rescue: 9155; Fax: 312 243

Other emergency number: +385 (0)51 242 321 (Harbour office Crikvenica)

E.T.A.

To be sent by: e-mail and fax

To: Port authorities Crikvenica

To be confirmed on VHF radio channel: 10

When: 2 hours before arrival

PORT R/T VHF

Local Call Frequencies

Approaching Port: Rijeka

VTS: Rijeka

Pilot: Croatia Pilot

Tugs: JPS

NEW REGULATIONS

New or changed regulations since the last Port Information Manual affecting the arrival, departure and stay of the above vessel in this port: There are no new regulations

PILOTAGE

Compulsory pilotage: No

TUGS

Compulsory tugs: NO

ARRIVAL & DEPARTURE

Restrictions on times of arrival & departure: No restrictions

CURRENTS & BAD WEATHER

Specific local weather conditions which make arrivals or departures unsuitable or inadvisable at certain times or seasons: page 4-6 in <http://www.portauthority.hr/rijeka/docs/pravilnik-rijeka-en.pdf>

WORKING HOURS

(hours for which overtime is NOT paid for)

Linesmen from 00:00 to 24:00

Officials from 08:00 to 16:00



BERTH DETAILS

Name of Principal Berth: Berth no.1

Number of berths in port: 1

Berth Details:

Berth 1: Length and draft 53/4; Height of pier from S.L.: 2.0

ISPS CODE & WATCHMAN

Approved ISPS plan: No

Watchmen Compulsory: No

Compulsory hand baggage scanning: No

GANGWAY & FINGER

Shore Gangway Available: NO

Can Ship gangways be used: YES

Finger Available: NO

AIR DRAUGHT

Bridges or other overhead objects which might obstruct the entry, exit or stay of the Ship in port: NO

ANCHORAGE

Ship required to anchor for Quarantine: NO

Anchorage positions available: 2x2 km

Details of each anchorage:

Anchor 1: Distance from shore landing place < than 5' with tender

East Anchorage area: Depth at anchorage 20-40 m; Distance from shore landing place < 0,5 Nm; Weather restrictions Westerly wind - Winter period

MOORING BUOYS

Mooring buoys available: NIL

TENDERS

Shore Tenders Compulsory: YES

FUEL

Marine Fuel Oil: NO

Intermediate Fuel Oil: NO

Marine Diesel Oil: NO

Marine Gas Oil: NO

FRESH WATER

Delivery rate per hour: 3 m³

Price x m³: 2 Eur

GARBAGE

Collected by (barge or truck): YES

Price x m³: 10 kn

Service compulsory: No

Tax payable if you do not offload: No

SLUDGE SLOP SEWAGE

Collected by (barge or truck): No

POLLUTION REGULATIONS & PENALTIES

Apart from the official pollution regulation, no additional special pollution regulations.

REPAIR FACILITIES ENGINE

Shipyard: several

Dry-dock:

<http://www.lenac.hr/Home.aspx?PageID=58>

Floating Dry-dock:

YES; Length 260 m; Width 34 m; Depth 17 m

Shore Power:

Voltage 440/380; Amps 300/500

Underwater photography - survey: several

Authorized Diving Service: several

Marine Electrical Engineers: several

Emergency Generator: several

Steel Carpenter: several

Heavy Marine Engineering: several

RADIO PRATIQUE

Can Ship receive Radio Pratique: NO

SHIP'S CLEARANCE

Required copies:

Passenger Lists: 2

Crew Lists: 2

Bonded Stores: 2

Provisions: 2

Crew Personal Effects: 2

Arms Declaration: 2

Cargo Declaration: 2

Stowaway Declaration: 2

Narcotics & Spares: 2

Maritime Declaration of Health: 2

Crew Vaccination list (Yellow Fever): 2

Ship's Clearance from Last Port:

last port of calls (2 pc)

CUSTOMS REQUISITES & REGULATIONS

Customs officials seal the following:

Main Bar: No; if ship is not sailing between croatian ports

Other Bars: No

Shops: No

Storerooms: No

Copies of forms presented to Customs on vessel arrival:

Crew Lists: 2

Passenger Lists: 2

Personal Effects of Crew: 2

Bonded Stores: 2

Provisions: 2

Ships Spares: 2

Arms Lists: 2

Cargo Declaration: 2

Narcotics Lists: 2

Ports of Call lists: 2

SEAMEN'S BOOKS

Seamen's Books recognized for embarking & disembarking Crew: YES

If passport has expired, can crew disembark (in transit) with current S. Book: YES

Type of Seaman's book accepted:

Crew Nationality: YES

Vessel nationality: YES

LANDING & DEBARKING PAX

Authorities charge a Landing and/or boarding fee for passengers in the following categories: Pax landing for sightseeing & returning to ship: NO

Pax landing for overland tours & rejoining ship in a subsequent port: NO

Pax permanently disembarking at this port or joining the vessel there to take part in the rest of the cruise: NO

PASSPORT

Balance of passport validity required for the following:

Transit passengers: IF VISA REQUIRED PASSPORT MUST EXCEED VISA VALIDATION PERIOD FOR MIN. 3 MONTHS

Disembarking passengers: IF VISA REQUIRED PASSPORT MUST EXCEED VISA VALIDATION PERIOD FOR MIN. 3 MONTHS

Crew (if disembarking in this port in transit): IF VISA REQUIRED PASSPORT MUST EXCEED VISA VALIDATION PERIOD FOR MIN. 3 MONTHS

LANDING CARDS

Landing Cards are necessary as follows:

For Passengers NO

For Crew NO

MORTUARY FACILITY

G.K.T.D. MURVICA

tel: 385 51 455 500

fax 385 51 241 060

www.murvica.hr/groblja

BANK SERVICE

Nearest bank: 100 m

Bank opening hours ashore: 08.00 - 20.00

TAXIS & SHUTTLE BUSES

Are taxis available: YES

Phone No. of most reliable company:

+385 (0)51 51 781 999

Is a Shuttle Bus service available: NO

POST OFFICE

Location (address): Very close to the port

Distance from ship: 100 m

Hours of operation: 08 h - 20 h

INTERNET & E-MAIL

Is a public Internet & E-mail service available: YES

Approx cost of Internet access for 1 hour:

Free of charge

PUBLIC TRANSPORT

Citybus (Autotrans d.o.o.) - official public transport

How far is it to the Ship's berth: 200 m

What time does Public Transport end (last bus, train etc): 12:00 PM

Is Public Transport considered 'Safe': Yes

CHURCHES

Catholic: YES; Pavla Radića 8,
Frankopanska 43

AIRPORT

Rijeka Airport

Approx. time in taxi: 30 MIN

KM to International airport from Ship:

20 km by road

TOURIST INFORMATION

Public Tourist Information office:

Very close to the port

Address: Trg Stjepana Radića 1/c

Telephone: +385 (0)51 241 051

Fax: +385 (0)51 241 867

E-mail: info@tzg-crikvenice.hr

Days & Hours open:

Every day 08h - 20h

SHOPS

KM from Ship to Shopping Centre:

Very close, distances in meters

By walking, how many minutes:

Five minutes

Shopping Hours: 08h - 20h/21h

Which days do shops not open:

All days open

Best way to get to shops: On foot

OTHER SERVICES

BUREAU VERITAS OFFICE: BV Croatia

Address: Riva 16/V, 51000 Rijeka, Croatia

Phone of BV office: +385 (0)51 213 672

Fax of BV office: +385 (0)51 211 067

Email of BV Office: office.croatia@hr.bureauveritas.com

RINA OFFICE: RINA JADRAN d.o.o.

Address: Flaciusova 1, 52100 Pula, Croatia

Notes: Attached to Trieste (I) Office

Phone of RINA office: +385 (0)52 373650

Fax of RINA office: +385 (0)52 373284

Email of RINA Office: jadran.office@rina.org

DIVING SERVICES: DSS

Address: Šupera 1, Crikvenica

Phone of Diving Company office:

+385 (0)51 781 467

Fax of Diving Company office:

+385 (0)51 242 721

Email of Diving Company Office:

dino@podvodni-radovi-dss.hr



KVARNER
Diversity is beautiful

KVARNER COUNTY TOURISM OFFICE

HR-51410 Opatija

Nikole Tesle 2

T +385 (0)51 272 988

F +385 (0)51 272 909

E kvarner@kvarner.hr

KVARNER INFO - ADRIATIC GATE

T +385 (0)51 623 333, 628 888

F +385 (0)51 623 334

E info@kvarner.hr

www.kvarner.hr



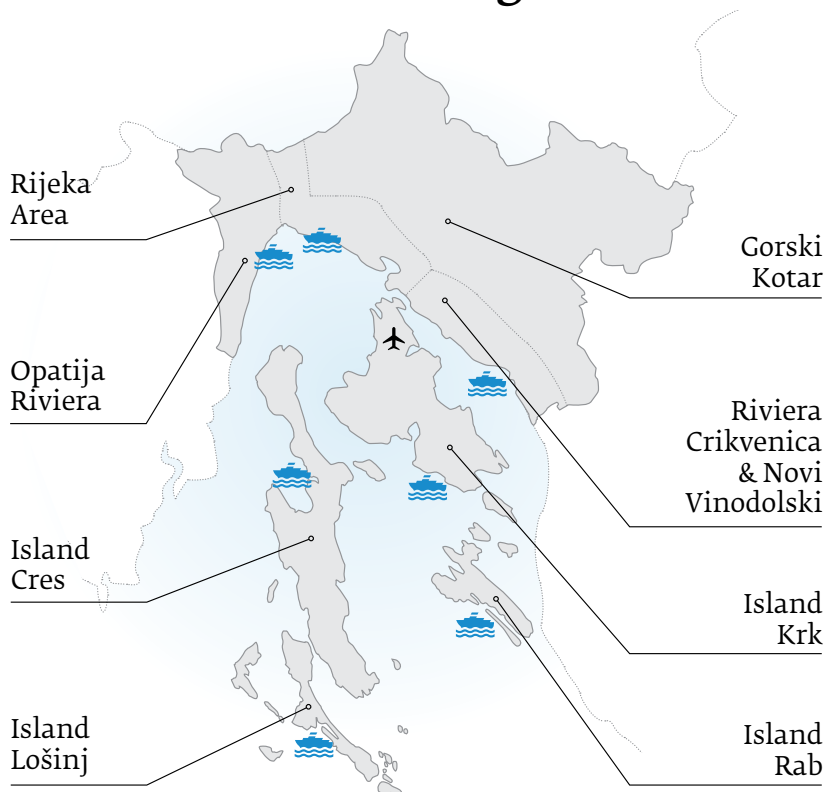
Croatia
KVARNER



Europe
CROATIA



KVARNER region



KVARNER
Diversity is beautiful

